

Robert Mapplethorpe

26/02/2019 - 20/04/2019

Robert Mapplethorpe

26 February – 20 April 2019

Galleria Franco Noero is pleased to present the third solo show by Robert Mapplethorpe, in the spaces in Via Mottalciata, in collaboration with The Robert Mapplethorpe Foundation.

The solo exhibition comes at the same time as two extraordinary shows devoted to the artist in two Italian Museums, the first – on display until 8 April – at MADRE, Museo d'Arte Contemporanea Donnaregina in Naples and the second, from 15 March, at the Gallerie Nazionali di Arte Antica, Galleria Corsini in Rome.

This is a magnificent opportunity to examine Mapplethorpe's great diversity as an artist and to immerse oneself in his art and experience the countless unusual points of view he captures in his photographs. His work remains in constant and relevant dialogue with the contemporary world, while also making and breaking links with history and the past.

In the exhibition in Naples, tangible affinities emerge in an empathic relationship with the city. The exhibition explores the performance-based origins of Mapplethorpe's work, and thus also a relationship with dance, theatre, and stage production. The theme of the body becomes a means to achieve remarkable affinities with the sculptures and paintings loaned for the occasion from the Museo e Real Bosco di Capodimonte and the National Archaeological Museum in Naples. In Rome, the arrangement of the works in the eighteenth-century Corsini picture gallery helps shed new light on the artist's work, creating an unprecedented relationship between the setting, the works, and the visitors, in a physical and conceptual space of collecting.

The evocative harmony of the gallery's post-industrial atmosphere, which recall those where Mapplethorpe and his contemporaries lived and worked, the selection of photographs on display in Turin looks at those aspects that capture the frenetic pace and zeitgeist of an age. They reveal an overwhelming desire to race through time with a thirst for experimentation, together with an all-devouring curiosity that was suddenly shattered by the unexpected death of Mapplethorpe in 1989, and with him the untimely disappearance of an entire generation.

The exhibition opens, with a colour photo showing the Archbishop of Canterbury in conversation, sitting on a bench on a lawn in the open air. This image might subliminally hark back to Mapplethorpe's religious education and his interest in its associated pageantry.

The wish to assert one's identity and a charismatic way of imposing oneself is the underlying theme in a series of portraits of the years immediately after. They are taken with raw immediacy against uneven white walls, with no studio backdrop, and no retouching or artifice, clearly capturing the personality of the sitters, their way of presenting themselves, and sometimes provoking simply by being there.

What follows forms a stark contrast, with photos from the 1980s completely created in the studio, with headless female bodies suspended against a uniform white background, with soft, suffused outlines. The hedonistic exaltation of body care and perfection was typical of those years, with a veneration of the gym not as a place where athletes are formed but where muscles are sculpted. A long, modulated sequence of works plays on shades of grey, with less contrast, freely ranging along many of the artist's lines of research: sensuality, sex, movement, torsion, the hieratic qualities of the pose, and a search for expressiveness.

Another colour picture, this time of a coin, marks a break, introducing a series of photographs of objects in solid silver that combine the blaze of glittering ceremonial triumph with static solemnity, followed by the image of a master of ceremonies captured in penitent anticipation while waiting to oblige his guests, like a latter-day Charon, by the door of a New York brasserie.

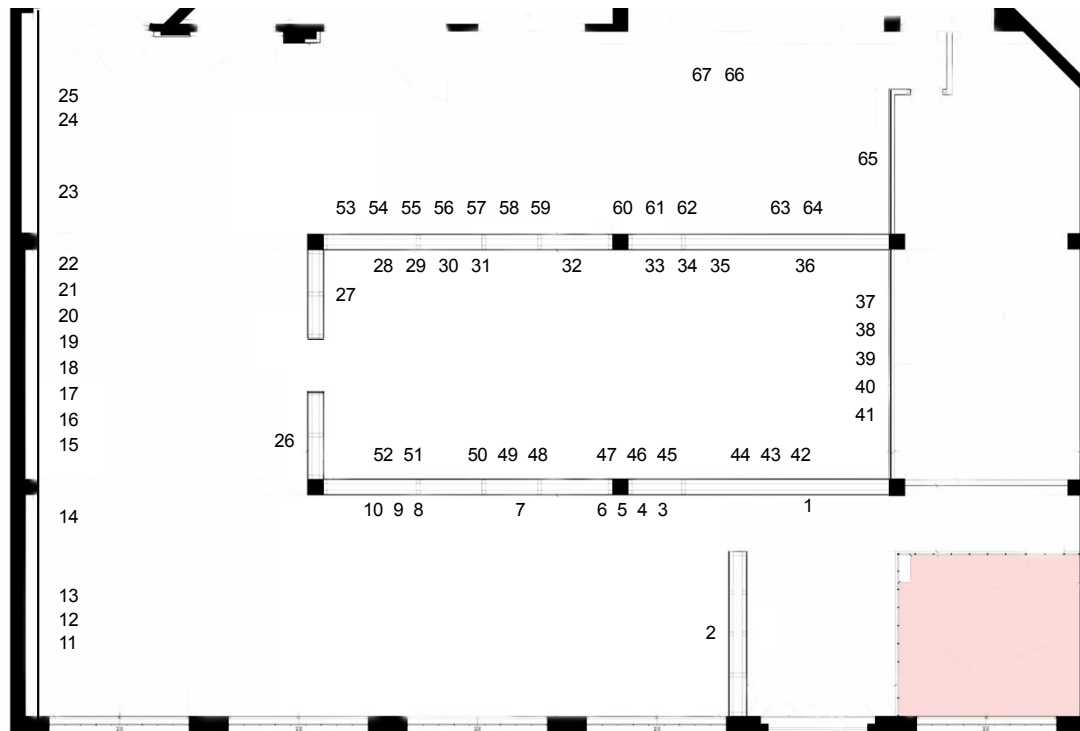
A series of photos of a rockabilly band points to some of what were to become distinctive traits of today's social identity, such as covering one's body with tattoos, which at the time were a clear symbol of transgression and unconventionality, and they remain so in the portraits despite the current habit of branding one's own body.

A selection of portraits in which the faces are more accentuated in black and white – viewed head on, with the eyes looking straight out at the photographer, and thus also at the viewer – aims to understand and reveal the personality of the sitters, conveying their appeal, whether or not they are famous.

Throughout the exhibition, the fame of some of the sitters, which is an undeniable and natural source of attraction, is deliberately never emphasised, in order not to give prominence over others to any of the aspects that Mapplethorpe aims to convey. Like this, a gourd is equivalent to a nude body in terms of its form, as a set of silver objects is to a headwaiter in a restaurant, as ebony bodies are to those of milky pallor, as sensual nudes are to a still life, as an artist is to a dish of frogs.

Robert Mapplethorpe (New York 1946 – Boston, MA 1989), studied drawing, painting and sculpture at the Pratt Institute in Brooklyn before embarking on a career, as an artist focused on his photographic practice, which led him to show his works in countless solo exhibitions in institutions around the world. One of the most important was the immense retrospective devoted to him by the Whitney Museum of American Art in New York in 1988, one year before his death. That year Mapplethorpe set up the Foundation that bears his name, in order to promote photography at the institutional level, and to raise funds for medical research to combat AIDS and HIV. The artist's work can be found in the collections of the world's leading museums and his historical and social importance continues to be the subject of major solo exhibitions around the globe. In addition to the two exhibitions now on display in Italian Museums, in Naples and Rome, an important retrospective is currently being devoted to the artist at the Solomon R. Guggenheim Museum in New York, following on from the recent ones in the United States at LACMA and the Getty Museum in Los Angeles.

Galleria Franco Noero



- | | | | | |
|---|--|---|--|--|
| 1. <i>The Archbishop</i> , 1975 MAP#DT52 | 15. <i>Molissa Fenley</i> , 1984 MAP#1352 | 29. <i>Gorham 1870 Centerpiece</i> , 1988 MAP#1923 | 43. <i>Bruce Chatwin</i> , 1979 MAP#254 | 57. <i>Thomas Woodruff</i> , 1980 MAP#419 |
| 2. <i>Lisa Lyon</i> , 1982 MAP#741 | 16. <i>Lisa Lyon</i> , 1982 MAP#701 | 30. <i>Whiting and Co. Water Pitcher</i> , 1988 MAP#1922 | 44. <i>Thomas Woodruff</i> , 1980 MAP#400 | 58. <i>Peter Berlin</i> , 1977 MAP#200 |
| 3. <i>Robert Wilson</i> , 1981 MAP#556 | 17. <i>Veronica Vera</i> , 1982 MAP#922 | 31. <i>Sphinx</i> , 1988 MAP#1926 | 45. <i>Orchid</i> , 1980 MAP#396 | 59. <i>Sybil Walker</i> , 1979 MAP#356 |
| 4. <i>Clarissa</i> , 1976 MAP#33 | 18. <i>Gourd</i> , 1983 MAP#1162 | 32. <i>One 5th Avenue</i> , 1979 MAP#284 | 46. <i>Untitled</i> , 1981 MAP#629 | 60. <i>Michael Roth</i> , 1983 MAP#1207 |
| 5. <i>Peter Farndon</i> , 1980 MAP#513 | 19. <i>Mike Spencer</i> , 1982 MAP#875 | 33. <i>Dennis Morgan</i> , 1980 MAP#366 | 47. <i>Jennifer Jakobson</i> , 1980 MAP#407 | 61. <i>Lisa Lyon</i> , 1982 MAP#899 |
| 6. <i>Francesco Clemente</i> , 1983 MAP#1119 | 20. <i>Arnold Schwarzenegger</i> , 1976 MAP#72 | 34. <i>Jill Chapman</i> , 1983 MAP#1205 | 48. <i>James Nelson</i> , 1978 MAP#122C | 62. <i>Michael Roth</i> , 1983 MAP#1194 |
| 7. <i>Peter Berlin</i> , 1976 MAP#211 | 21. <i>Lisa Lyon</i> , 1982 MAP#817 | 35. <i>Phillip Prioleau</i> , 1982 MAP#784 | 49. <i>Julian Schnabel</i> , 1983 MAP#1019 | 63. <i>Lisa Lyon</i> , 1982 MAP#819 |
| 8. <i>Lydia Cheng</i> , 1984 MAP#1421 | 22. <i>Ron Stevenson</i> , 1978 MAP#206 | 36. <i>Ganymede with Jupiter's Eagle</i> , 1988 MAP#1967 | 50. <i>Lawrence Weimer</i> , 1979 MAP#1982 | 64. <i>Lydia Cheng</i> , 1987 MAP#1764 |
| 9. <i>Lydia Cheng</i> , 1984 MAP#1422 | 23. <i>Lisa Lyon</i> , 1982 MAP#692 | 37. <i>Tim Scott</i> , 1980 MAP#521 | 51. <i>Flower</i> , 1981 MAP#563 | 65. <i>James Ford</i> , 1979 MAP#344 |
| 10. <i>Lydia Cheng</i> , 1984 MAP#1423 | 24. <i>Milton Moore</i> , 1980 MAP#540 | 38. <i>Tim Scott</i> , 1980 MAP#491 | 52. <i>Frogs</i> , 1984 MAP#1918 | 66. <i>Andes</i> , 1979 MAP#323 |
| 11. <i>Lisa Lyon</i> , 1982 MAP#767 | 25. <i>Nadia</i> , 1987 MAP#1774 | 39. <i>Smutty</i> , 1980 MAP#490 | 53. <i>Clifton</i> , 1981 MAP#599 | 67. <i>Richard Gere</i> , 1982 MAP#1584 |
| 12. <i>Milton Moore</i> , 1981 MAP#615 | 26. <i>Ajitto</i> , 1981 MAP#544 | 40. <i>The Rockcats</i> , 1980 MAP#489 | 54. <i>Bill King</i> , 1980 MAP#1586 | |
| 13. <i>Susan Sarandon</i> , 1983 MAP#1983 | 27. <i>Coin</i> , 1988 MAP#DT1969 | 41. <i>Smutty</i> , 1980 MAP#669 | 55. <i>Phyllis Tweel</i> , 1979 MAP#278 | |
| 14. <i>Diane de Beauvau</i> , 1977 MAP#114 | 28. <i>Gorham Seafood Servers</i> , 1988 MAP#1925 | 42. <i>Hans-Gerd</i> , 1979 MAP#350 | 56. <i>Tennant Twins</i> , 1976 MAP#44 | |



Exhibition view
Robert Mapplethorpe, 26/02/2019 - 20/04/2019
©Robert Mapplethorpe Foundation. Courtesy of Galleria Franco Noero, Turin



Robert Mapplethorpe
Archbishop of Canterbury

1975

dye-transfer print

Paper 50.8 x 40.6 cm / 20 x 16 inches

Image 34.6 x 34.6 cm / 13 5/8 x 13 5/8 inches

Frame 63 x 61 x 3 cm / 24 6/8 x 24 x 1 1/8 inches

Edition 2/3

MAP#DT52



Exhibition view

Robert Mapplethorpe, 26/02/2019 - 20/04/2019

©Robert Mapplethorpe Foundation. Courtesy of Galleria Franco Noero, Turin



Exhibition view

Robert Mapplethorpe, 26/02/2019 - 20/04/2019

©Robert Mapplethorpe Foundation. Courtesy of Galleria Franco Noero, Turin



Robert Mapplethorpe

Lisa Lyon

1982

silver gelatin print

Paper 50.8 x 40.6 cm / 20 x 16 inches

Image 38.7 x 38.7 cm / 15 2/8 x 15 2/8 inches

Frame 63 x 61 x 3 cm / 24 6/8 x 24 x 1 1/8 inches

Edition 6/10

MAP#741



Exhibition view
Robert Mapplethorpe, 26/02/2019 - 20/04/2019
©Robert Mapplethorpe Foundation. Courtesy of Galleria Franco Noero, Turin



Exhibition view

Robert Mapplethorpe, 26/02/2019 - 20/04/2019

©Robert Mapplethorpe Foundation. Courtesy of Galleria Franco Noero, Turin



Robert Mapplethorpe

Robert Wilson

1981

silver gelatin print

Paper 50.8 x 40.6 cm / 20 x 16 inches

Image 35.2 x 34.9 cm / 13 7/8 x 13 6/8 inches

Frame 63 x 61 x 3 cm / 24 6/8 x 24 x 1 1/8 inches

Edition 5/10

MAP#556



Robert Mapplethorpe

Clarissa

1976

silver gelatin print

Paper 50.8 x 40.6 cm / 20 x 16 inches

Image 35.2 x 35.2 cm / 13 ⁷/₈ x 13 ⁷/₈ inches

Frame 63 x 61 x 3 cm / 24 ⁶/₈ x 24 x 1 ¹/₈ inches

Edition 4/5

MAP#33



Robert Mapplethorpe

Peter Farndon

1980

silver gelatin print

Paper 50.8 x 40.6 cm / 20 x 16 inches

Image 35.8 x 35.5 cm / 14 1/8 x 14 inches

Frame 63 x 61 cm / 24 6/8 x 24 inches

Edition 3/15

MAP#513



Robert Mapplethorpe

Francesco Clemente

1983

silver gelatin print

Paper 50.8 x 40.6 cm / 20 x 16 inches

Image 38.4 x 37.8 cm / 15 1/8 x 14 7/8 inches

Frame 63 x 61 x 3 cm / 24 6/8 x 24 x 1 1/8 inches

Edition 4/10

MAP#1119



Robert Mapplethorpe

Peter Berlin

1976

silver gelatin print

Paper 50.8 x 40.6 cm

Image 35.2 x 35.2 cm

Frame 63 x 61 x 3 cm

Edition 7/10

MAP#211

Exhibition view

Robert Mapplethorpe, 26/02/2019 - 20/04/2019

©Robert Mapplethorpe Foundation. Courtesy of Galleria Franco Noero, Turin



Robert Mapplethorpe

Peter Berlin

1976

silver gelatin print

Paper 50.8 x 40.6 cm / 20 x 16 inches

Image 35.2 x 35.2 cm / 13 7/8 x 13 7/8 inches

Frame 63 x 61 x 3 cm / 24 6/8 x 24 x 1 1/8 inches

Edition 7/10

MAP#211



Exhibition view

Robert Mapplethorpe, 26/02/2019 - 20/04/2019

©Robert Mapplethorpe Foundation. Courtesy of Galleria Franco Noero, Turin



Robert Mapplethorpe

Lydia Cheng

1984

silver gelatin print

Paper 50.8 x 40.6 cm / 20 x 16 inches

Image 48.7 x 37.9 cm / 19 ¹/₈ x 14 ⁷/₈ inches

Frame 77 x 64 x 3 cm / 30 ³/₈ x 25 ²/₈ x 1 ¹/₈ inches

Edition 4/10

MAP#1421



Robert Mapplethorpe

Lydia Cheng

1984

silver gelatin print

Paper 50.8 x 40.6 cm / 20 x 16 inches

Image 39.0 x 39.0 cm / 15 ³/₈ x 15 ³/₈ inches

Frame 63 x 61 x 3 cm / 24 ⁶/₈ x 24 x 1 ¹/₈ inches

Edition 5/10

MAP#1422



Robert Mapplethorpe

Lydia Cheng

1984

silver gelatin print

Paper 50.8 x 40.6 cm / 20 x 16 inches

Image 48.2 x 38.1 cm / 19 x 15 inches

Frame 77 x 64 x 3 cm / 30 ³/₈ x 25 ²/₈ x 1 ¹/₈ inches

Edition 4/10

MAP#1423



Exhibition view

Robert Mapplethorpe, 26/02/2019 - 20/04/2019

©Robert Mapplethorpe Foundation. Courtesy of Galleria Franco Noero, Turin



Exhibition view

Robert Mapplethorpe, 26/02/2019 - 20/04/2019

©Robert Mapplethorpe Foundation. Courtesy of Galleria Franco Noero, Turin



Robert Mapplethorpe

Lisa Lyon

1982

silver gelatin print

Paper 50.8 x 40.6 cm / 20 x 16 inches

Image 48.5 x 38.1 cm / 19 1/8 x 15 inches

Frame 77 x 64 x 3 cm / 30 3/8 x 25 2/8 x 1 1/8 inches

Edition 5/10

MAP#767



Robert Mapplethorpe

Milton Moore

1981

silver gelatin print

Paper 50.8 x 40.6 cm / 20 x 16 inches

Image 48.2 x 38.2 cm / 19 x 15 inches

Frame 77 x 64 x 3 cm / 30 ³/₈ x 25 ²/₈ x 1 ¹/₈ inches

Edition 4/10

MAP#615



Robert Mapplethorpe

Susan Sarandon

1983

silver gelatin print

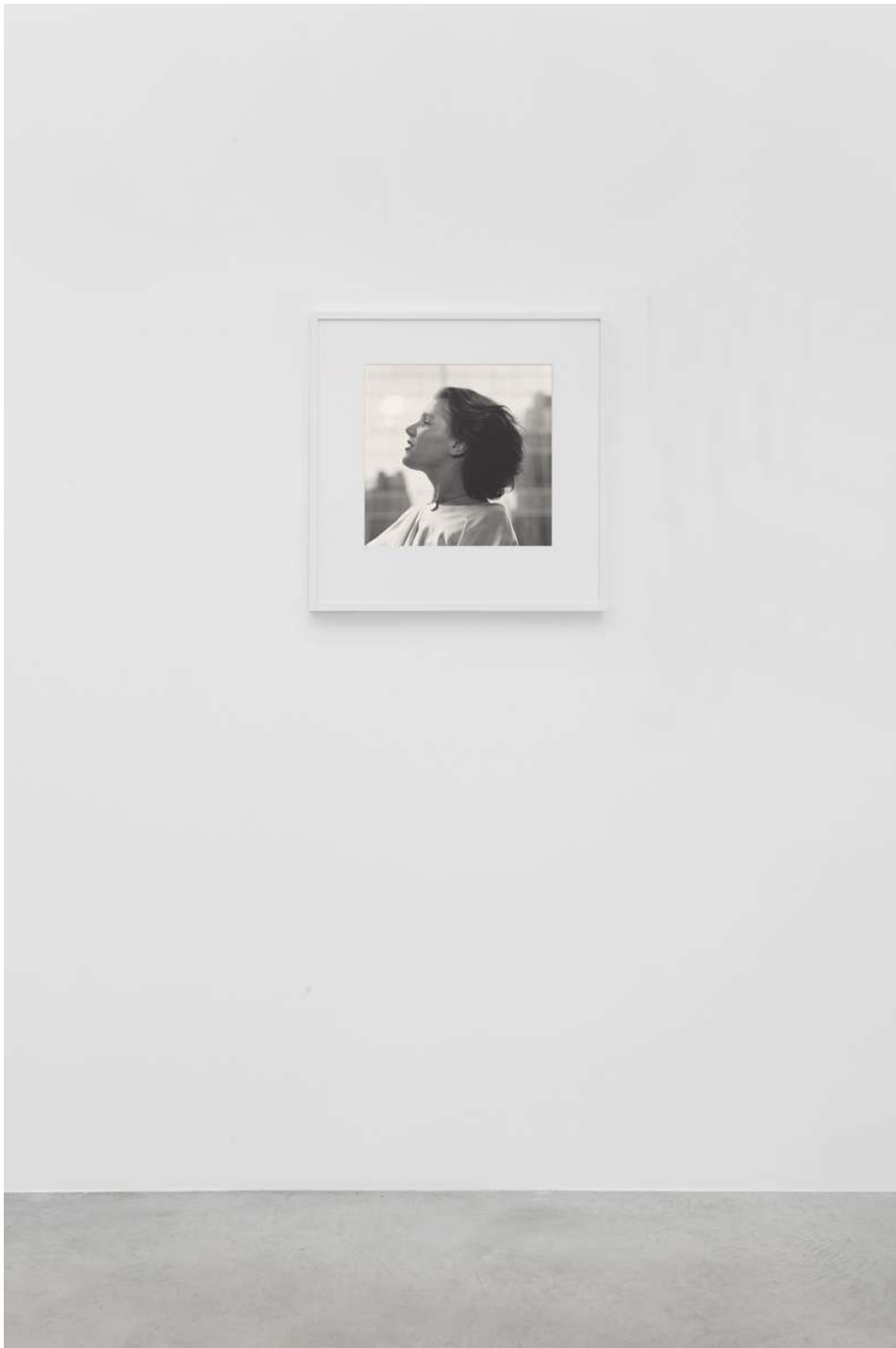
Paper 50.8 x 40.6 cm / 20 x 16 inches

Image 48.5 x 38.1 cm / 19 1/8 x 15 inches

Frame 77 x 64 x 3 cm / 30 3/8 x 25 2/8 x 1 1/8 inches

Edition 3/10

MAP#1117



Robert Mapplethorpe

Diane de Beauvau

1977

silver gelatin print

Paper 50.8 x 40.6 cm

Image 35.5 x 35.5 cm

Frame 63 x 61 x 3 cm

Edition 2/10

MAP#114

Exhibition view

Robert Mapplethorpe, 26/02/2019 - 20/04/2019

©Robert Mapplethorpe Foundation. Courtesy of Galleria Franco Noero, Turin



Robert Mapplethorpe

Diane de Beauvau

1977

silver gelatin print

Paper 50.8 x 40.6 cm / 20 x 16 inches

Image 35.5 x 35.5 cm / 14 x 14 inches

Frame 63 x 61 x 3 cm / 24 6/8 x 24 x 1 1/8 inches

Edition 2/10

MAP#114



Exhibition view

Robert Mapplethorpe, 26/02/2019 - 20/04/2019

©Robert Mapplethorpe Foundation. Courtesy of Galleria Franco Noero, Turin



Robert Mapplethorpe

Molissa Fenley

1984

silver gelatin print

Paper 50.8 x 40.6 cm / 20 x 16 inches

Image 38.6 x 38.6 cm / 15 1/8 x 15 1/8 inches

Frame 63 x 61 x 3 cm / 24 6/8 x 24 x 1 1/8 inches

Edition 3/10

MAP#1352



Robert Mapplethorpe

Lisa Lyon

1982

silver gelatin print

Paper 50.8 x 40.6 cm / 20 x 16 inches

Image 38.1 x 38.1 cm / 15 x 15 inches

Frame 63 x 61 x 3 cm / 24 ⁶/₈ x 24 x 1 ¹/₈ inches

Edition 5/10

MAP#701



Robert Mapplethorpe

Veronica Vera

1982

silver gelatin print

Paper 50.8 x 40.6 cm / 20 x 16 inches

Image 38.7 x 38.7 cm / 15 2/8 x 15 2/8 inches

Frame 63 x 61 x 3 cm / 24 6/8 x 24 x 1 1/8 inches

Edition 5/10

MAP#922



Robert Mapplethorpe

Gourd

1983

silver gelatin print

Paper 50.8 x 40.6 cm / 20 x 16 inches

Image 48.9 x 37.8 cm / 19 ²/₈ x 14 ⁷/₈ inches

Frame 77 x 64 x 3 cm / 30 ³/₈ x 25 ²/₈ x 1 ¹/₈ inches

Edition 5/10

MAP#1162



Robert Mapplethorpe

Mike Spencer

1982

silver gelatin print

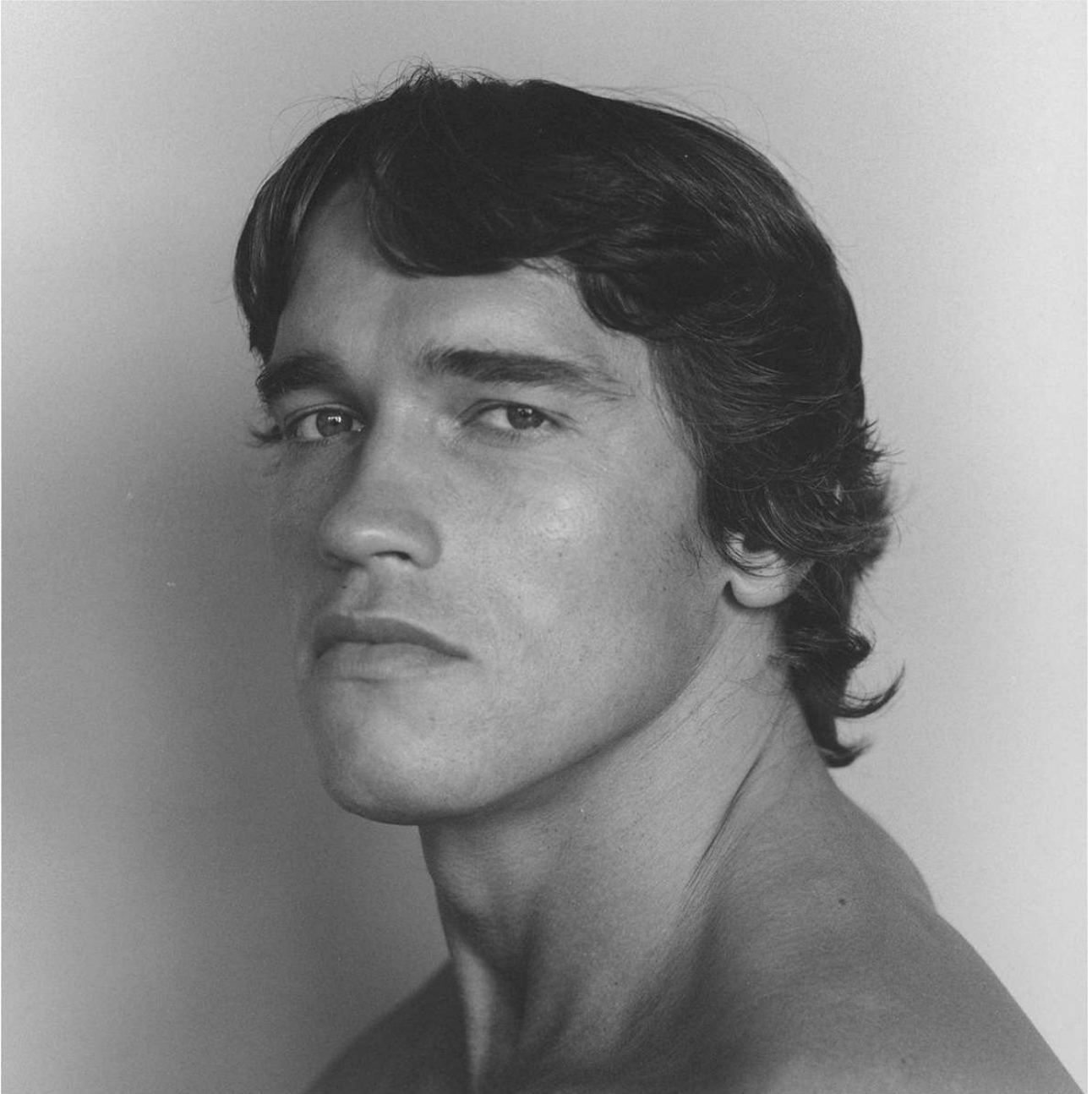
Paper 50.8 x 40.6 cm / 20 x 16 inches

Image 48.2 x 38.1 cm / 19 x 15 inches

Frame 77 x 64 x 3 cm / 30 ³/₈ x 25 ²/₈ x 1 ¹/₈ inches

Edition 5/10

MAP#875



Robert Mapplethorpe
Arnold Schwarzenegger
1976
silver gelatin print
Paper 50.8 x 40.6 cm / 20 x 16 inches
Image 35.2 x 35.2 cm / 13 7/8 x 13 7/8 inches
Frame 63 x 61 x 3 cm / 24 6/8 x 24 x 1 1/8 inches
Edition 7/10
MAP#72



Robert Mapplethorpe

Lisa Lyon

1982

silver gelatin print

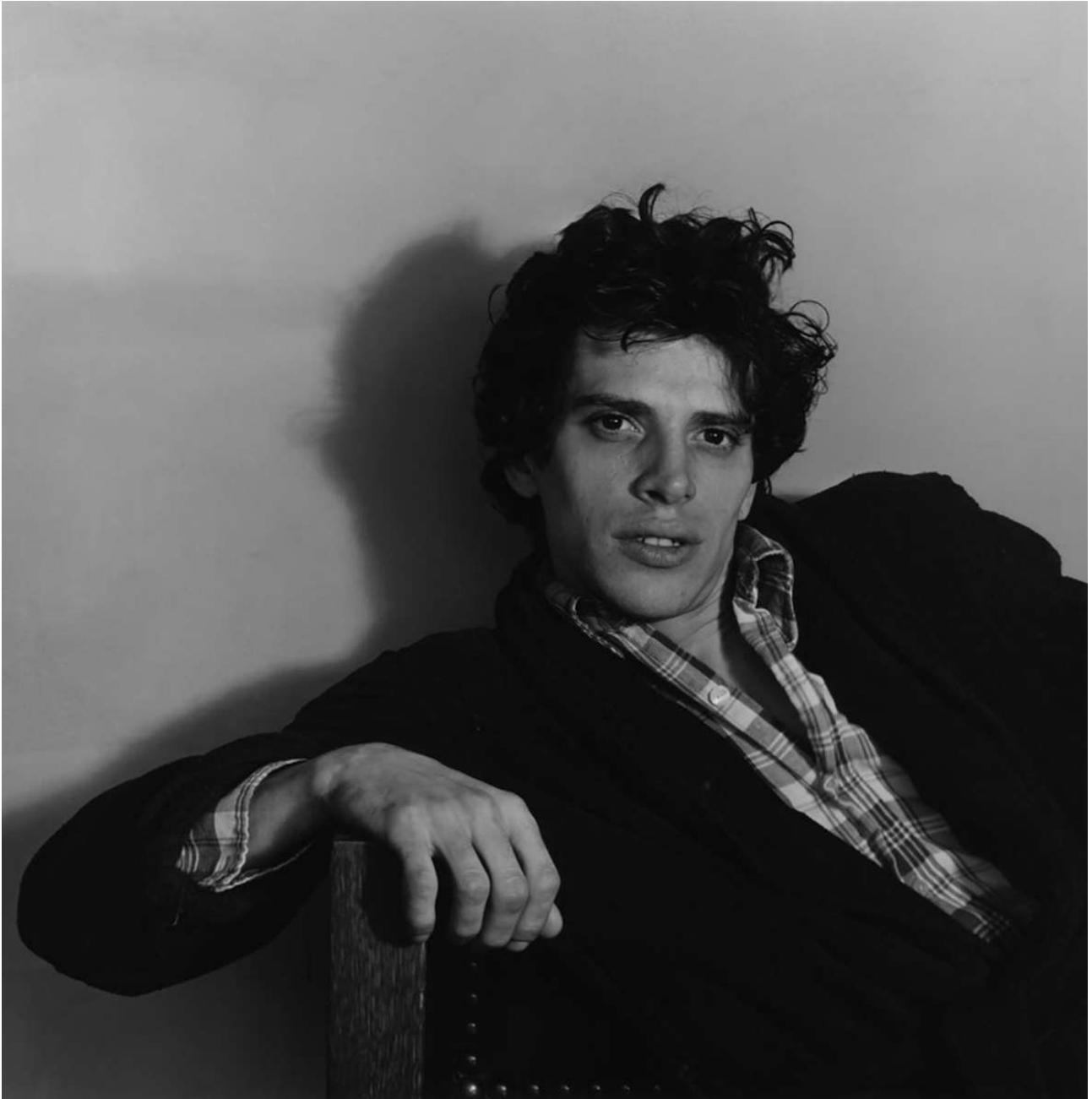
Paper 40.6 x 50.8 cm / 16 x 20 inches

Image 38.4 x 37.7 cm / 15 1/8 x 14 7/8 inches

Frame 63 x 61 x 3 cm / 24 6/8 x 24 x 1 1/8 inches

Edition 9/10

MAP#817



Robert Mapplethorpe

Ron Stevenson

1978

silver gelatin print

Paper 50.8 x 40.6 cm / 20 x 16 inches

Image 35.2 x 35.2 cm / 13 7/8 x 13 7/8 inches

Frame 63 x 61 x 3 cm / 24 6/8 x 24 x 1 1/8 inches

Edition 3/10

MAP#206



Robert Mapplethorpe

Lisa Lyon

1982

silver gelatin print

Paper 50.8 x 40.6 cm

Image 38.9 x 38.7 cm

Frame 63 x 61 x 3 cm

Edition 6/10

MAP#692

Exhibition view

Robert Mapplethorpe, 26/02/2019 - 20/04/2019

©Robert Mapplethorpe Foundation. Courtesy of Galleria Franco Noero, Turin



Robert Mapplethorpe

Lisa Lyon

1982

silver gelatin print

Paper 50.8 x 40.6 cm / 20 x 16 inches

Image 38.9 x 38.7 cm / 15 2/8 x 15 2/8 inches

Frame 63 x 61 x 3 cm / 24 6/8 x 24 x 1 1/8 inches

Edition 6/10

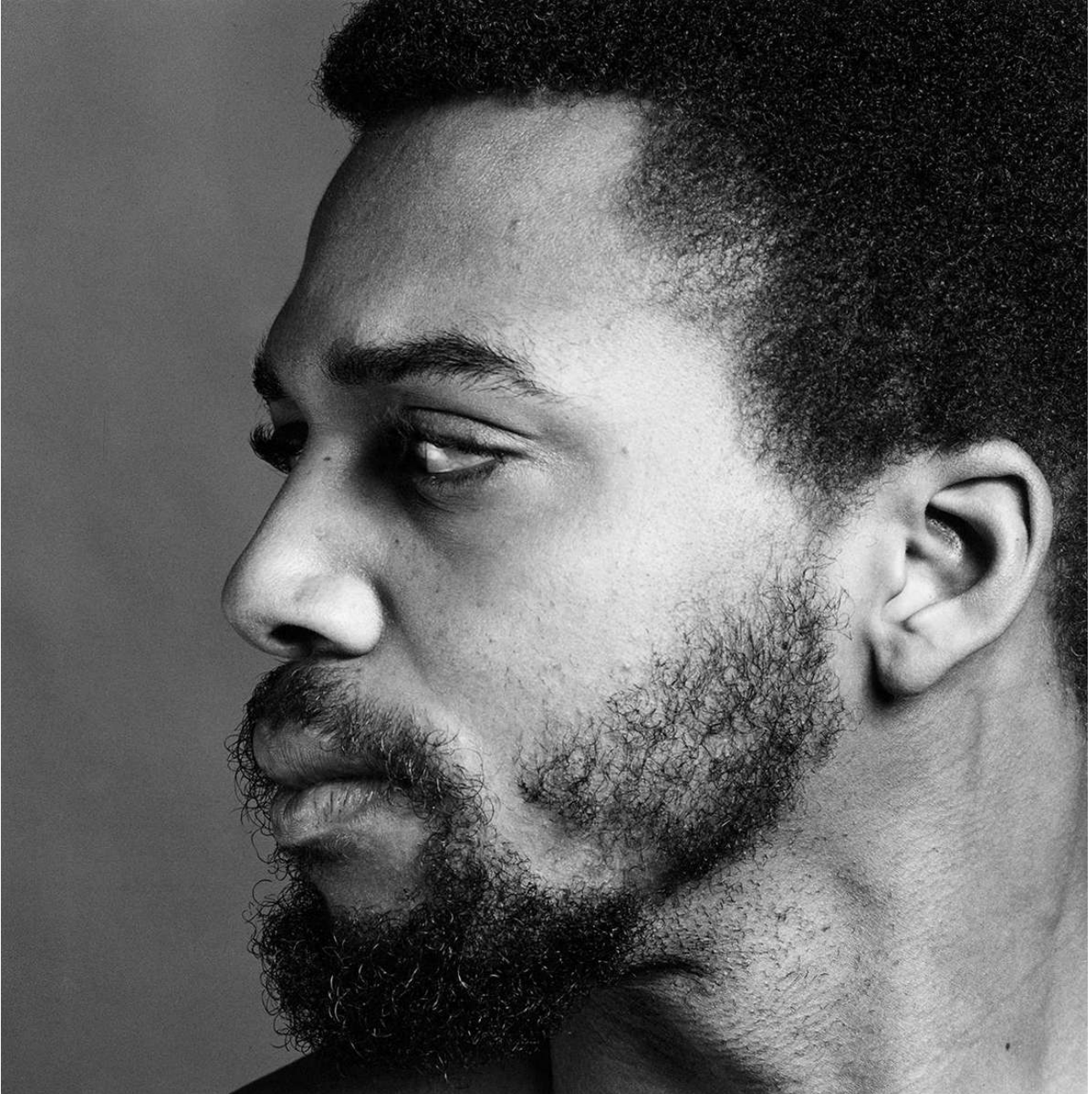
MAP#692



Exhibition view

Robert Mapplethorpe, 26/02/2019 - 20/04/2019

©Robert Mapplethorpe Foundation. Courtesy of Galleria Franco Noero, Turin



Robert Mapplethorpe

Milton Moore

1980

silver gelatin print

Paper 50.8 x 40.6 cm / 20 x 16 inches

Image 35.5 x 35.5 cm / 14 x 14 inches

Frame 63 x 61 cm / 24 6/8 x 24 inches

Edition 4/10

MAP#540



Robert Mapplethorpe

Nadia

1987

silver gelatin print

Paper 50.8 x 60.9 cm / 20 x 24 inches

Image 48.9 x 48.9 cm / 19 2/8 x 19 2/8 inches

Frame 77 x 74 x 3 cm / 30 3/8 x 29 1/8 x 1 1/8 inches

Edition 8/10

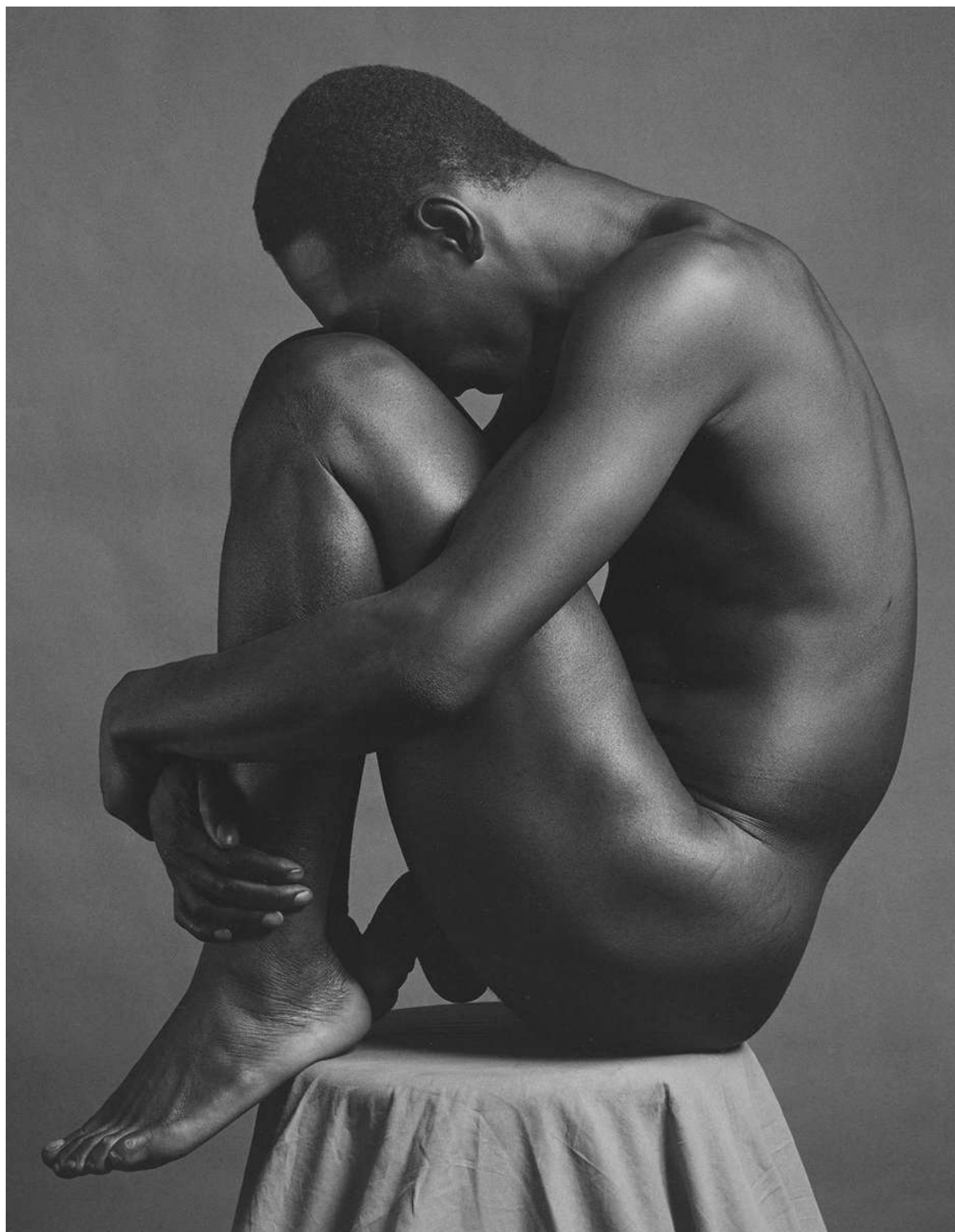
MAP#1774



Exhibition view

Robert Mapplethorpe, 26/02/2019 - 20/04/2019

©Robert Mapplethorpe Foundation. Courtesy of Galleria Franco Noero, Turin



Robert Mapplethorpe

Ajitto

1981

silver gelatin print

Paper 50.8 x 40.6 cm / 20 x 16 inches

Image 45.1 x 35.5 cm / 17 ³/₄ x 14 inches

Frame 77 x 64 x 3 cm / 30 ³/₈ x 25 ²/₈ x 1 ¹/₈ inches

Edition 13/15

MAP#544



Exhibition view

Robert Mapplethorpe, 26/02/2019 - 20/04/2019

©Robert Mapplethorpe Foundation. Courtesy of Galleria Franco Noero, Turin



Exhibition view

Robert Mapplethorpe, 26/02/2019 - 20/04/2019

©Robert Mapplethorpe Foundation. Courtesy of Galleria Franco Noero, Turin



Robert Mapplethorpe

Coin

1988

dye-transfer print

Paper 50.8 x 60.9 cm / 20 x 24 inches

Image 46.0 x 56.8 cm / 18 1/8 x 22 3/8 inches

Frame 74 x 85 x 3 cm / 29 1/8 x 33 1/2 x 1 1/8 inches

AP 1/3 (Edition 1/1 + 3 AP)

MAP#DT1969



Exhibition view

Robert Mapplethorpe, 26/02/2019 - 20/04/2019

©Robert Mapplethorpe Foundation. Courtesy of Galleria Franco Noero, Turin



Exhibition view

Robert Mapplethorpe, 26/02/2019 - 20/04/2019

©Robert Mapplethorpe Foundation. Courtesy of Galleria Franco Noero, Turin



Robert Mapplethorpe
Gorham Seafood Servers
1988

silver gelatin print

Paper 60.9 x 50.8 cm / 24 x 20 inches

Image 48.5 x 48.5 cm / 19 1/8 x 19 1/8 inches

Frame 77 x 74 x 3 cm / 30 3/8 x 29 1/8 x 1 1/8 inches

Edition 7/10

MAP#1925



Robert Mapplethorpe
Gorham 1870 Centerpiece
1988

silver gelatin print

Paper 60.9 x 50.8 cm / 24 x 20 inches

Image 48.9 x 48.9 cm / 19 2/8 x 19 2/8 inches

Frame 77 x 74 x 3 cm / 30 3/8 x 29 1/8 x 1 1/8 inches

Edition 3/10

MAP#1923



Robert Mapplethorpe
Whiting and Co. Water Pitcher
1988
silver gelatin print
Paper 60.9 x 50.8 cm / 24 x 20 inches
Image 48.5 x 48.5 cm / 19 ¹/₈ x 19 ¹/₈ inches
Frame 77 x 74 x 3 cm / 30 ³/₈ x 29 ¹/₈ x 1 ¹/₈ inches
Edition 8/10
MAP#1922



Robert Mapplethorpe

Sphinx

1988

silver gelatin print

Paper 60.9 x 50.8 cm / 24 x 20 inches

Image 49.0 x 48.8 cm / 19 2/8 x 19 2/8 inches

Frame 77 x 74 x 3 cm / 30 3/8 x 29 1/8 x 1 1/8 inches

AP 1/2 (Edition 1/1 + 2 AP)

MAP#1926



Robert Mapplethorpe
One 5th Avenue

1979

silver gelatin print

Paper 50.8 x 40.6 cm

Image 35.5 x 35.5 cm

Frame 63 x 61 x 3 cm

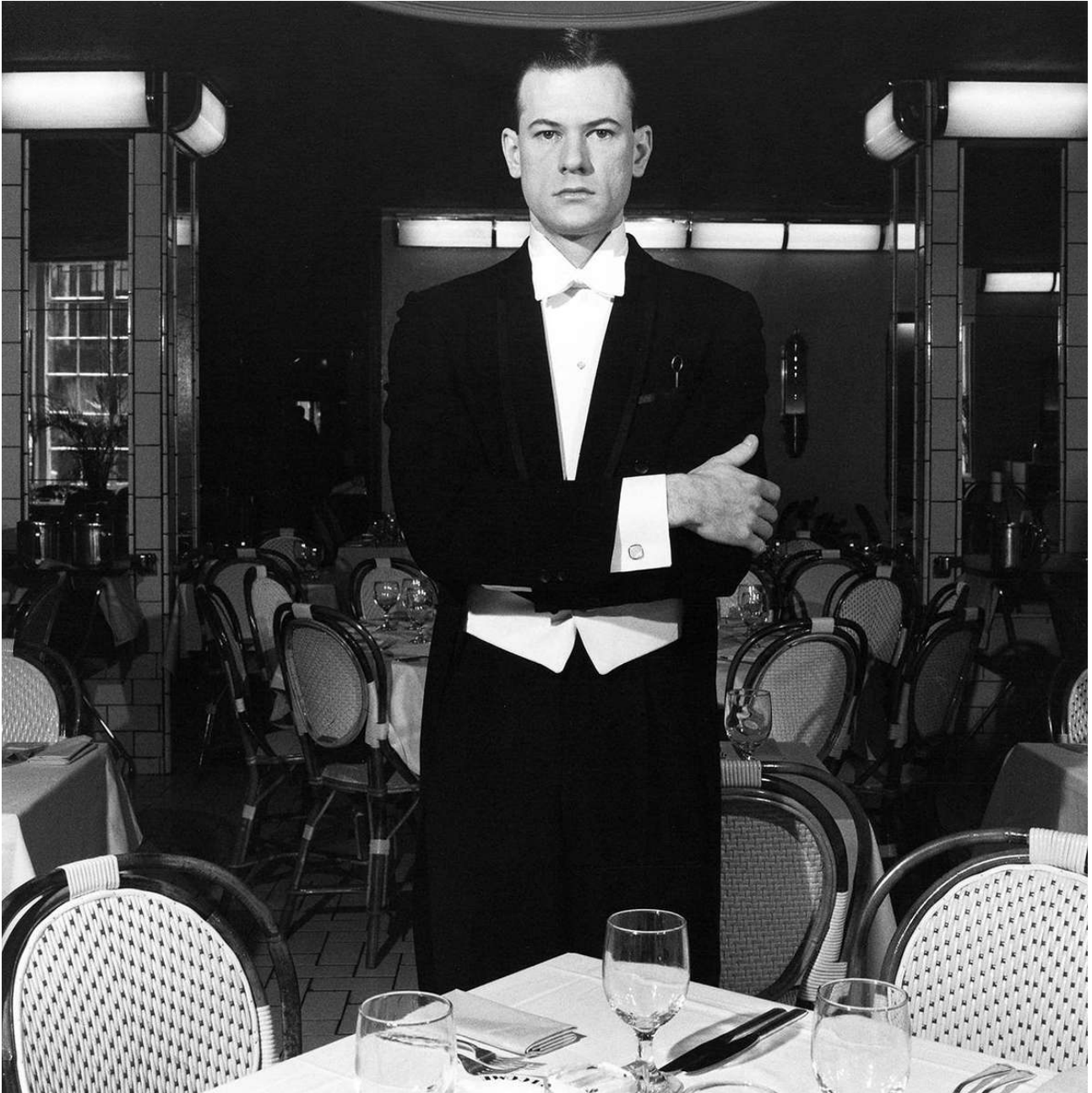
Edition 6/10

MAP#284

Exhibition view

Robert Mapplethorpe, 26/02/2019 - 20/04/2019

©Robert Mapplethorpe Foundation. Courtesy of Galleria Franco Noero, Turin



Robert Mapplethorpe

One 5th Avenue

1979

silver gelatin print

Paper 50.8 x 40.6 cm / 20 x 16 inches

Image 35.5 x 35.5 cm / 14 x 14 inches

Frame 63 x 61 x 3 cm / 24 6/8 x 24 x 1 1/8 inches

Edition 6/10

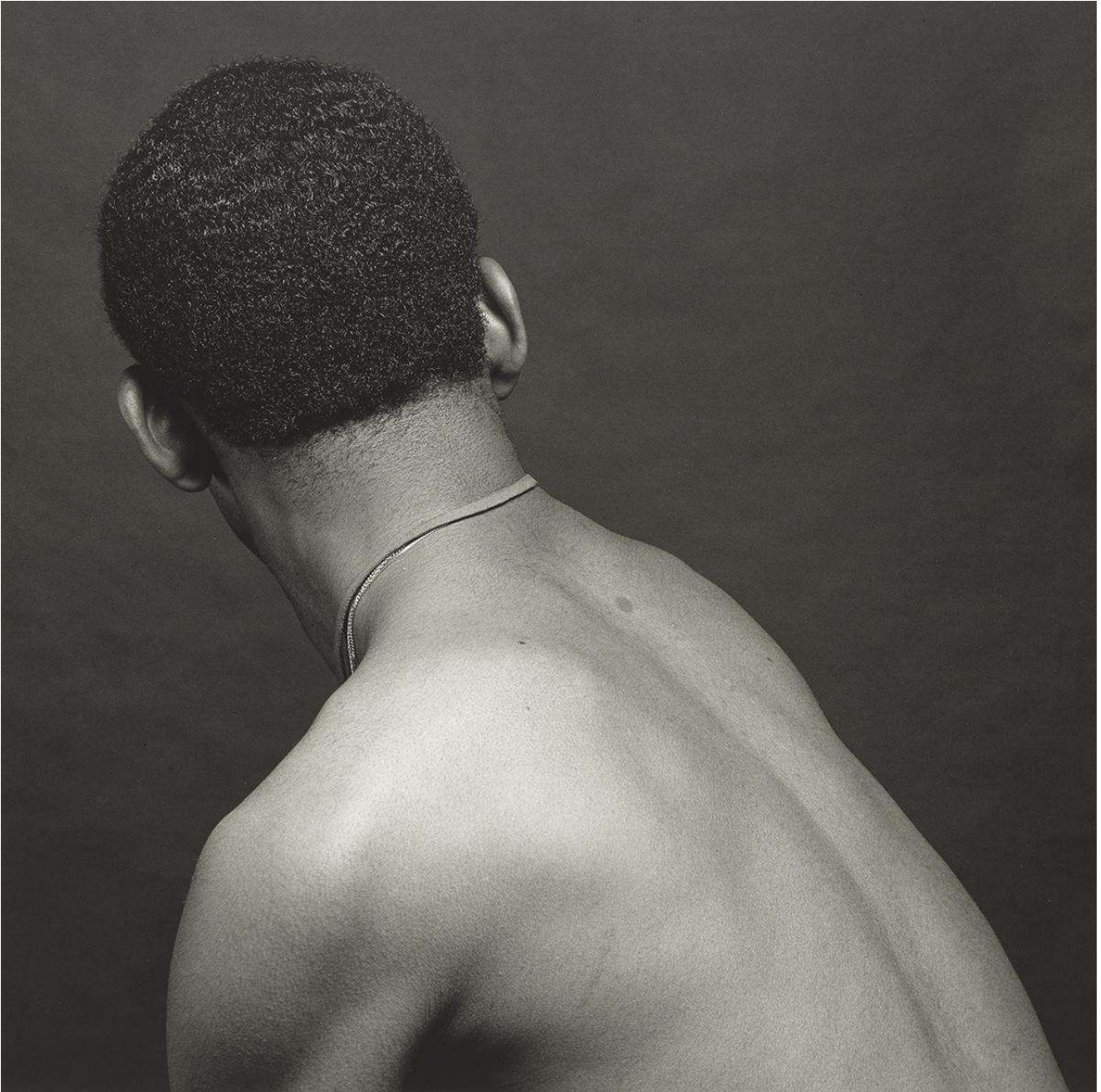
MAP#284



Exhibition view

Robert Mapplethorpe, 26/02/2019 - 20/04/2019

©Robert Mapplethorpe Foundation. Courtesy of Galleria Franco Noero, Turin



Robert Mapplethorpe

Dennis Morgan

1980

silver gelatin print

Paper 50.8 x 40.6 cm / 20 x 16 inches

Image 35.1 x 35.1 cm / 13 ⁶/₈ x 13 ⁶/₈ inches

Frame 63 x 61 x 3 cm / 24 ⁶/₈ x 24 x 1 ¹/₈ inches

Edition 4/10

MAP#366



Robert Mapplethorpe

Jill Chapman

1983

silver gelatin print

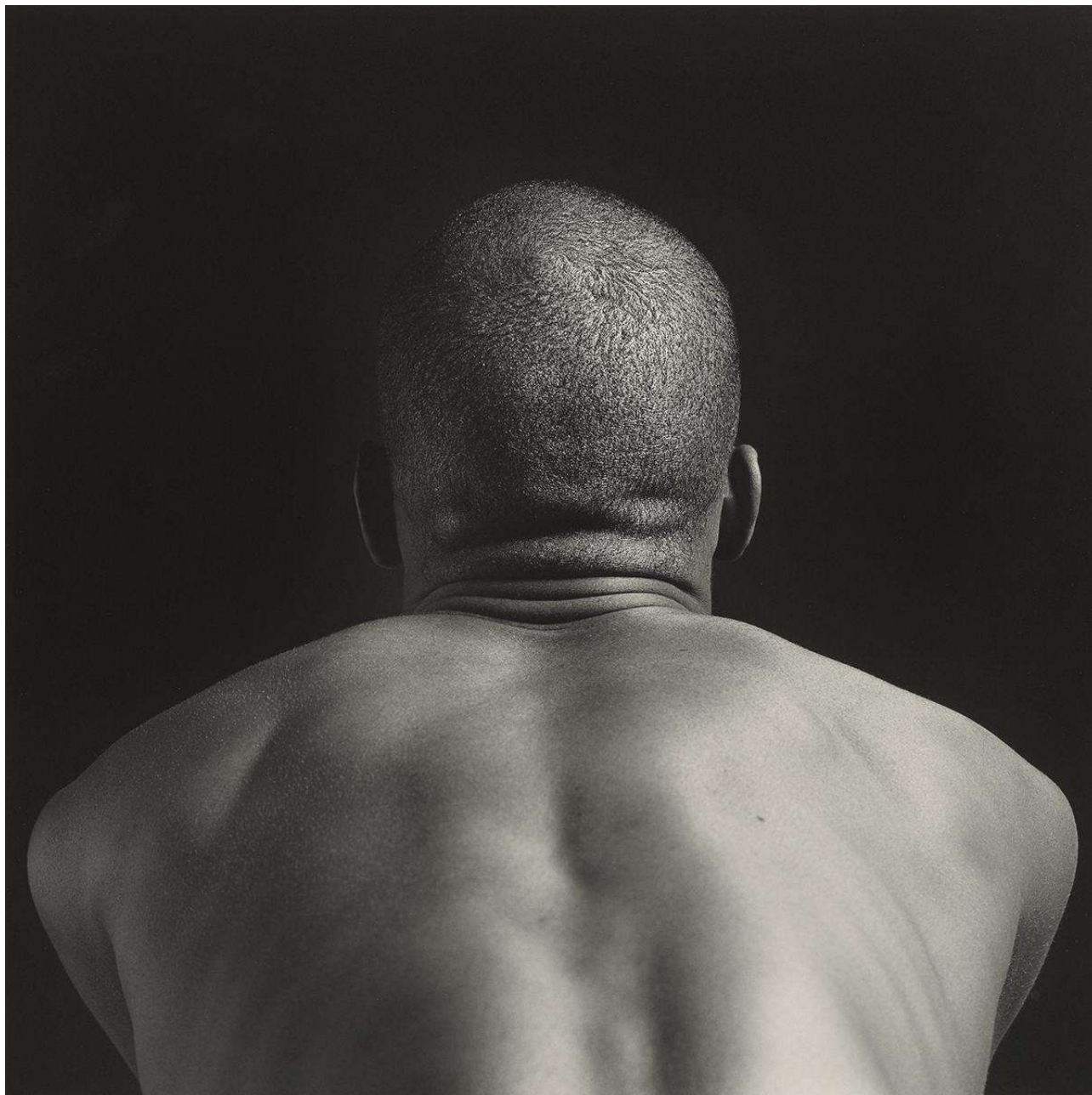
Paper 50.8 x 40.6 cm / 20 x 16 inches

Image 38.4 x 38.1 cm / 15 1/8 x 15 inches

Frame 63 x 61 x 3 cm / 24 6/8 x 24 x 1 1/8 inches

Edition 5/10

MAP#1205



Robert Mapplethorpe

Phillip Prioleau

1982

silver gelatin print

Paper 50.8 x 40.6 cm / 20 x 16 inches

Image 38.4 x 38.1 cm / 15 1/8 x 15 inches

Frame 63 x 61 x 3 cm / 24 6/8 x 24 x 1 1/8 inches

Edition 5/10

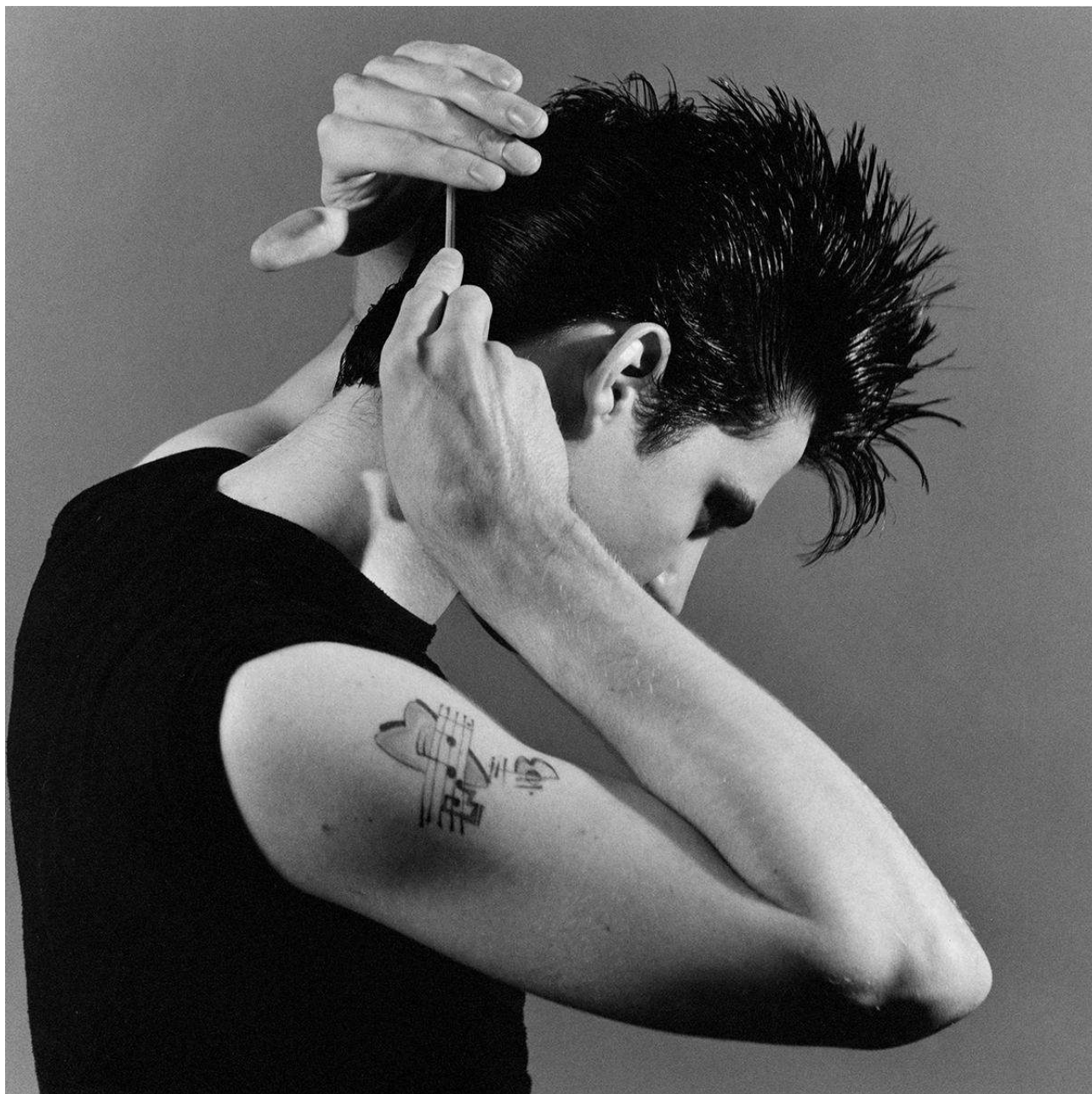
MAP#784



Exhibition view

Robert Mapplethorpe, 26/02/2019 - 20/04/2019

©Robert Mapplethorpe Foundation. Courtesy of Galleria Franco Noero, Turin



Robert Mapplethorpe

Tim Scott

1980

silver gelatin print

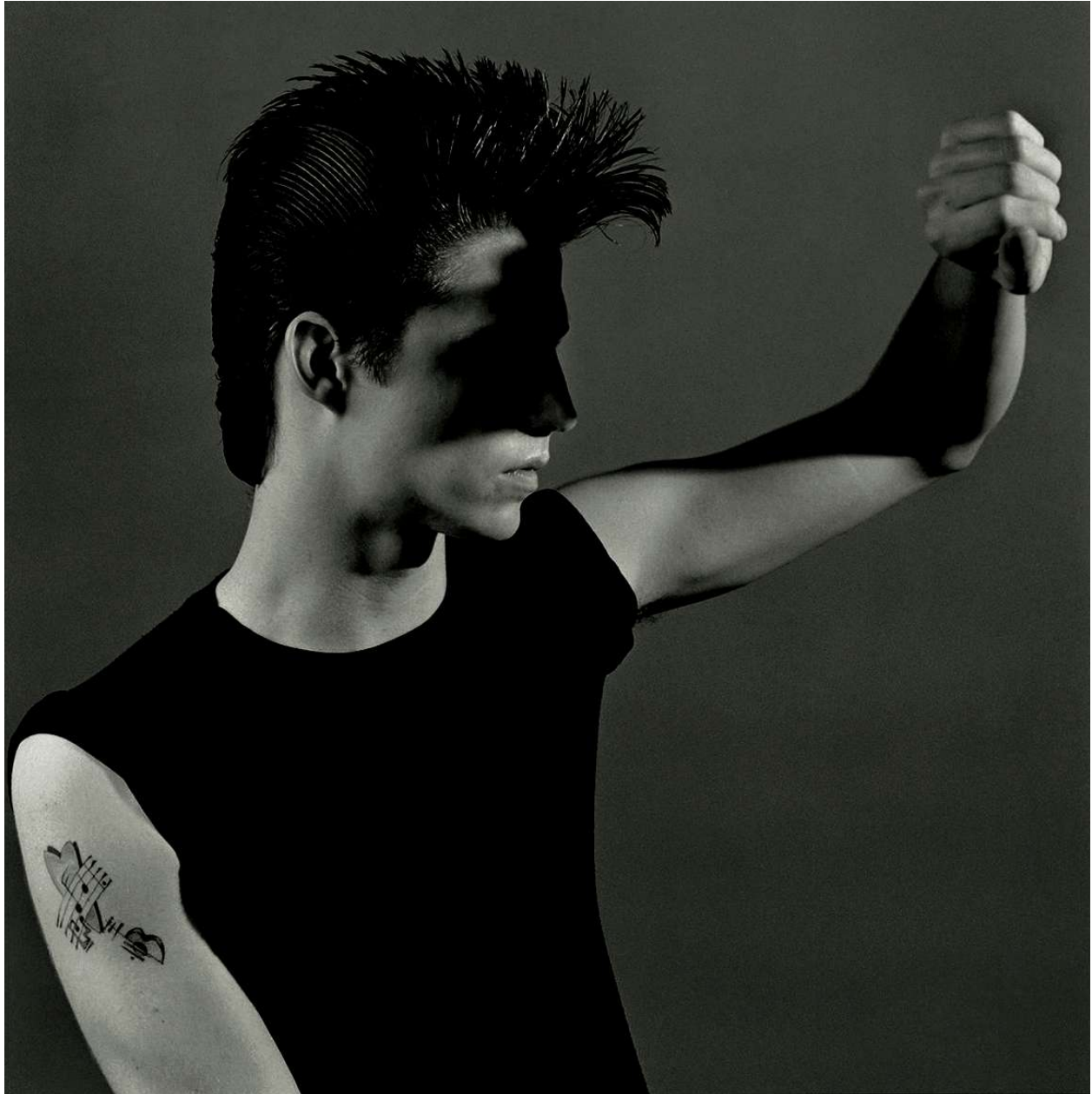
Paper 50.8 x 40.6 cm / 20 x 16 inches

Image 34.9 x 34.9 cm / 13 6/8 x 13 6/8 inches

Frame 63 x 61 cm / 24 6/8 x 24 inches

Edition 7/15

MAP#521



Robert Mapplethorpe

Tim Scott

1980

silver gelatin print

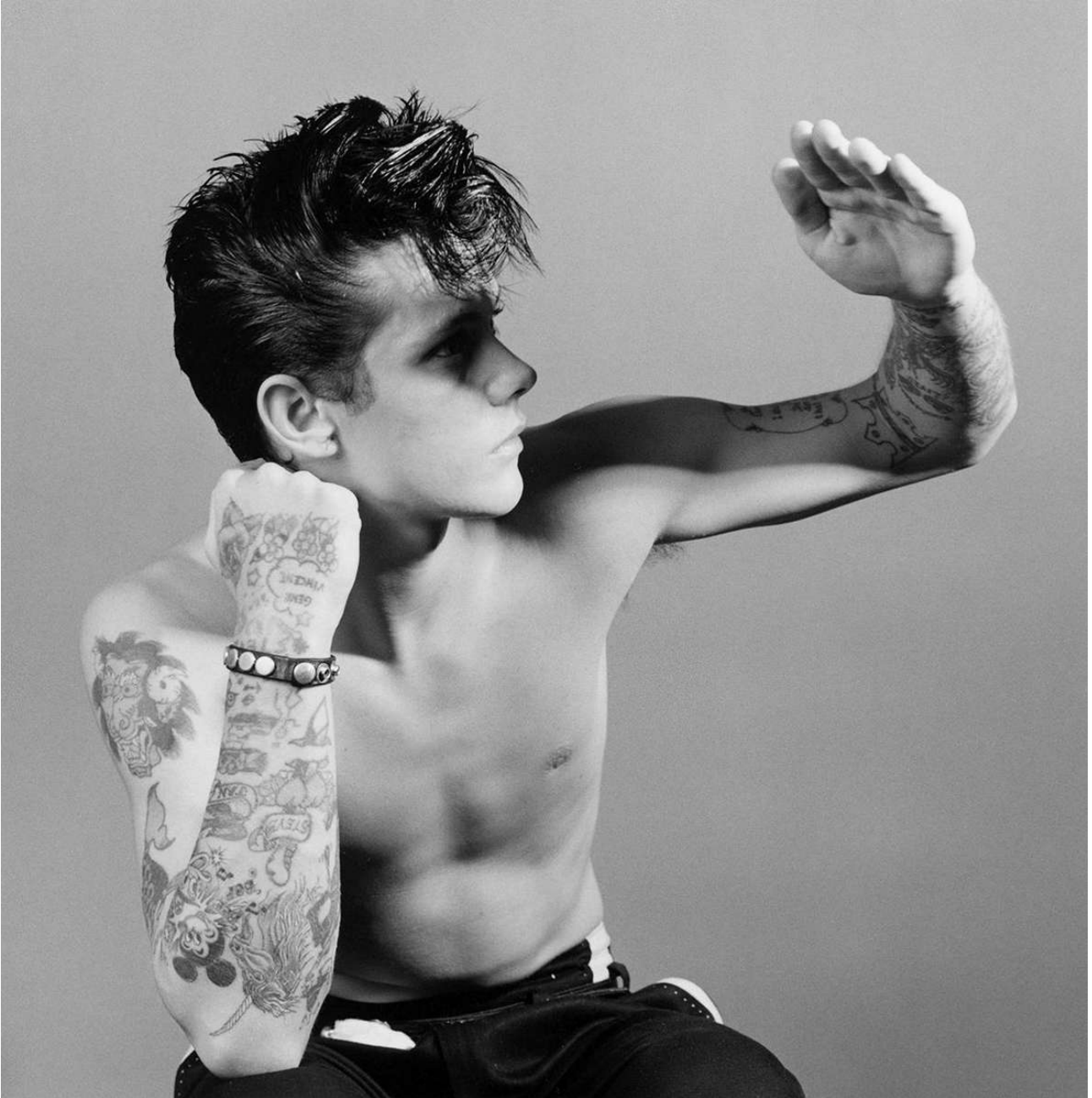
Paper 50.8 x 40.6 cm / 20 x 16 inches

Image 35.5 x 35.5 cm / 14 x 14 inches

Frame 63 x 61 cm / 24 6/8 x 24 inches

AP 1/3 (Edition 1/1 + 3 AP)

MAP#491



Robert Mapplethorpe

Smutty

1980

silver gelatin print

Paper 50.8 x 40.6 cm / 20 x 16 inches

Image 35.2 x 34.9 cm / 13 ⁷/₈ x 13 ⁶/₈ inches

Frame 63 x 61 cm / 24 ⁶/₈ x 24 inches

Edition 12/15

MAP#490



Robert Mapplethorpe

The Rockcats

1980

silver gelatin print

Paper 50.8 x 40.6 cm / 20 x 16 inches

Image 34.9 x 34.9 cm / 13 6/8 x 13 6/8 inches

Frame 63 x 61 cm / 24 6/8 x 24 inches

Edition 4/15

MAP#489



Robert Mapplethorpe

Smutty

1980

silver gelatin print

Paper 50.8 x 40.6 cm / 20 x 16 inches

Image 35.8 x 35.8 cm / 14 ¹/₈ x 14 ¹/₈ inches

Frame 63 x 61 cm / 24 ⁶/₈ x 24 inches

Edition 12/15

MAP#669



Exhibition view

Robert Mapplethorpe, 26/02/2019 - 20/04/2019

©Robert Mapplethorpe Foundation. Courtesy of Galleria Franco Noero, Turin



Exhibition view

Robert Mapplethorpe, 26/02/2019 - 20/04/2019

©Robert Mapplethorpe Foundation. Courtesy of Galleria Franco Noero, Turin



Robert Mapplethorpe

Hans-Gerd

1979

silver gelatin print

Paper 40.6 x 50.8 cm / 16 x 20 inches

Image 35.2 x 35.2 cm / 13 7/8 x 13 7/8 inches

Frame 63 x 61 x 3 cm / 24 6/8 x 24 x 1 1/8 inches

Edition 6/10

MAP#350



Robert Mapplethorpe

Bruce Chatwin

1979

silver gelatin print

Paper 50.8 x 40.6 cm / 20 x 16 inches

Image 35.2 x 35.2 cm / 13 7/8 x 13 7/8 inches

Frame 63 x 61 x 3 cm / 24 6/8 x 24 x 1 1/8 inches

Edition 4/10

MAP#254



Robert Mapplethorpe

Thomas Woodruff

1980

silver gelatin print

Paper 50.8 x 40.6 cm / 20 x 16 inches

Image 35.2 x 35.2 cm / 13 7/8 x 13 7/8 inches

Frame 63 x 61 cm / 24 6/8 x 24 inches

Edition 3/15

MAP#400



Exhibition view

Robert Mapplethorpe, 26/02/2019 - 20/04/2019

©Robert Mapplethorpe Foundation. Courtesy of Galleria Franco Noero, Turin



Robert Mapplethorpe

Orchid

1980

silver gelatin print

Image 50.8 x 40.6 cm / 20 x 16 inches

Paper 35.2 x 35.2 cm / 13 7/8 x 13 7/8 inches

Frame 63 x 61 cm / 24 6/8 x 24 inches

Edition 11/15

MAP#396



Robert Mapplethorpe

Untitled

1981

silver gelatin print

Paper 50.8 x 40.6 cm / 20 x 16 inches

Image 38.7 x 38.7 cm / 15 2/8 x 15 2/8 inches

Frame 63 x 61 x 3 cm / 24 6/8 x 24 x 1 1/8 inches

Edition 7/10

MAP#629



Robert Mapplethorpe

Jennifer Jakobson

1980

silver gelatin print

Paper 50.8 x 40.6 cm / 20 x 16 inches

Image 35.1 x 35.1 cm / 13 ⁶/₈ x 13 ⁶/₈ inches

Frame 63 x 61 cm / 24 ⁶/₈ x 24 inches

Edition 2/15

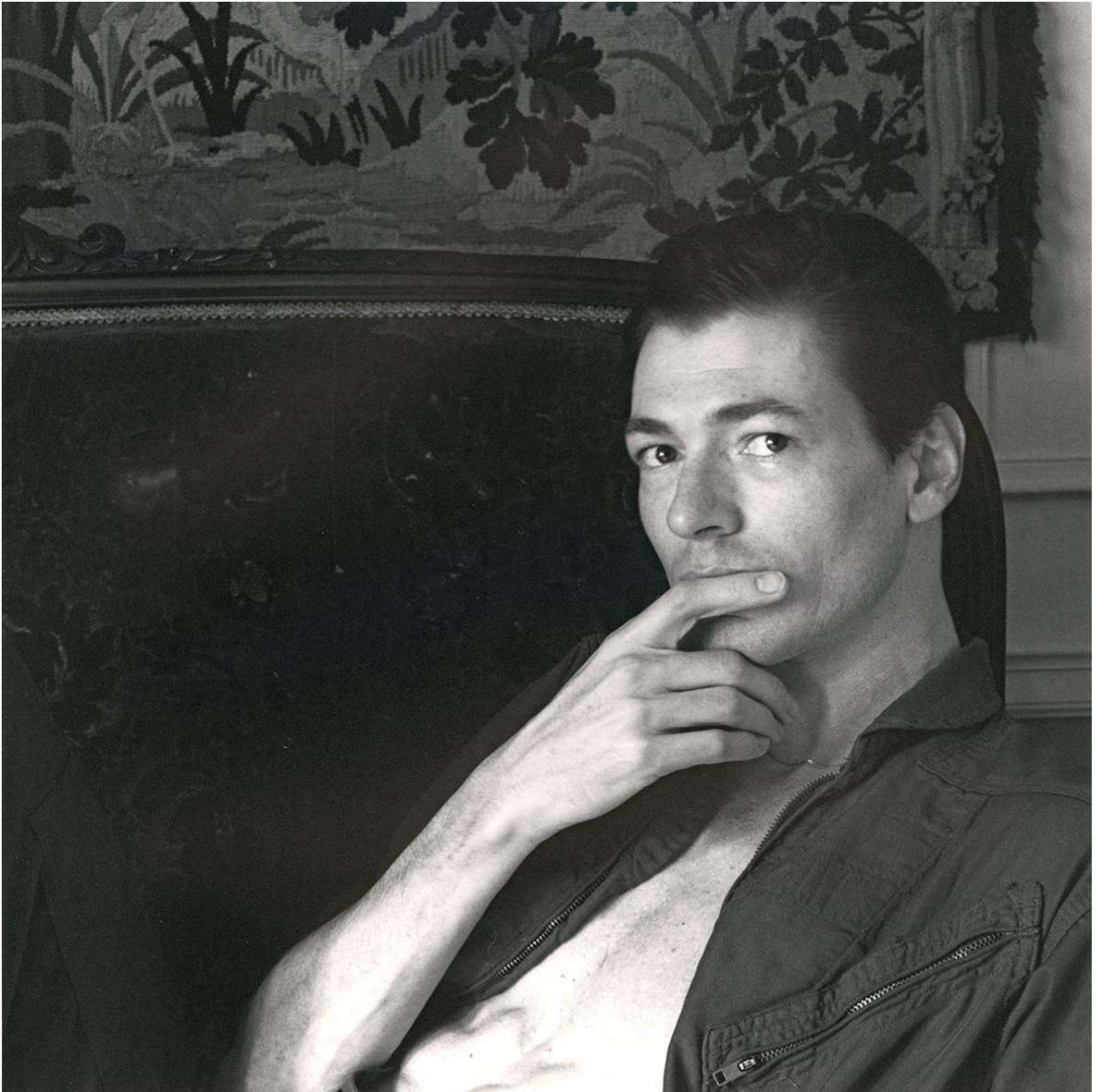
MAP#407



Exhibition view

Robert Mapplethorpe, 26/02/2019 - 20/04/2019

©Robert Mapplethorpe Foundation. Courtesy of Galleria Franco Noero, Turin



Robert Mapplethorpe

James Nelson

1978

silver gelatin print

Paper 50.8 x 40.6 cm / 20 x 16 inches

Image 35.2 x 35.2 cm / 13 7/8 x 13 7/8 inches

Frame 63 x 61 x 3 cm / 24 6/8 x 24 x 1 1/8 inches

AP 2/2 (Edition 1/1 + 2 AP)

MAP#122C



Robert Mapplethorpe

Julian Schnabel

1983

silver gelatin print

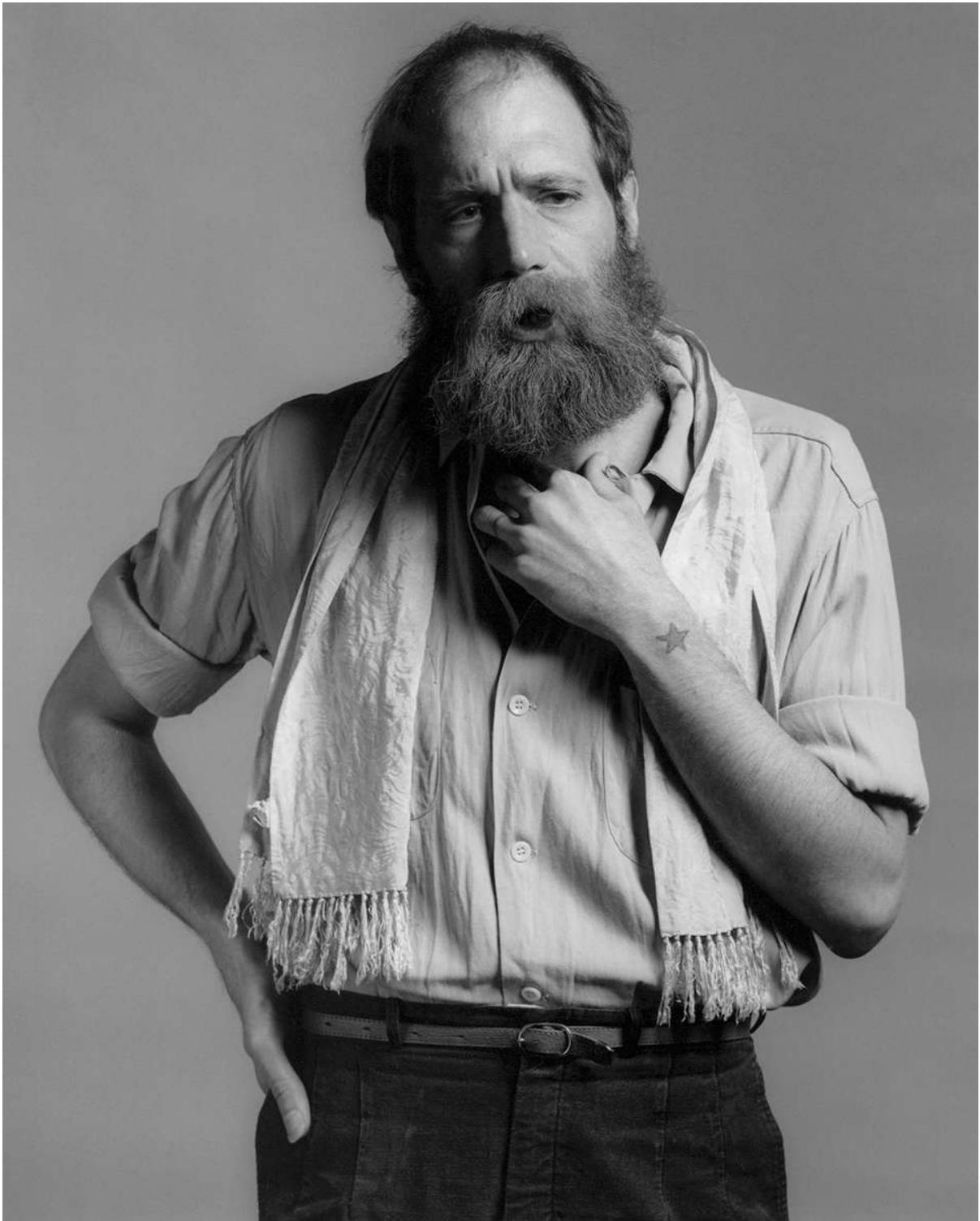
Paper 50.8 x 40.6 cm / 20 x 16 inches

Image 48.5 x 38.1 cm / 19 ¹/₈ x 15 inches

Frame 77 x 64 x 3 cm / 30 ³/₈ x 25 ²/₈ x 1 ¹/₈ inches

Edition 7/10

MAP#1019



Robert Mapplethorpe

Lawrence Weiner

1982

silver gelatin print

Paper 50.8 x 40.6 cm / 20 x 16 inches

Image 48.4 x 37.9 cm / 19 x 14 ⁷/₈ inches

Frame 77 x 64 x 3 cm / 30 ³/₈ x 25 ²/₈ x 1 ¹/₈ inches

Edition 6/10

MAP#927



Exhibition view

Robert Mapplethorpe, 26/02/2019 - 20/04/2019

©Robert Mapplethorpe Foundation. Courtesy of Galleria Franco Noero, Turin



Robert Mapplethorpe

Flower

1981

silver gelatin print

Paper 50.8 x 40.6 cm / 20 x 16 inches

Image 34.9 x 35.2 cm / 13 ⁶/₈ x 13 ⁷/₈ inches

Frame 63 x 61 x 3 cm / 24 ⁶/₈ x 24 x 1 ¹/₈ inches

Edition 9/15

MAP#563



Robert Mapplethorpe

Frogs

1984

silver gelatin print

Paper 50.8 x 40.6 cm / 20 x 16 inches

Image 38.4 x 38.6 cm / 15 1/8 x 15 1/8 inches

Frame 63 x 61 x 3 cm / 24 6/8 x 24 x 1 1/8 inches

Edition 7/10

MAP#1918



Exhibition view

Robert Mapplethorpe, 26/02/2019 - 20/04/2019

©Robert Mapplethorpe Foundation. Courtesy of Galleria Franco Noero, Turin



Exhibition view

Robert Mapplethorpe, 26/02/2019 - 20/04/2019

©Robert Mapplethorpe Foundation. Courtesy of Galleria Franco Noero, Turin



Exhibition view

Robert Mapplethorpe, 26/02/2019 - 20/04/2019

©Robert Mapplethorpe Foundation. Courtesy of Galleria Franco Noero, Turin



Robert Mapplethorpe

Clifton

1981

silver gelatin print

Paper 50.8 x 40.6 cm / 20 x 16 inches

Image

Image 38.4 x 38.4 cm / 15 1/8 x 15 1/8 inches

Frame 63 x 61 x 3 cm / 24 6/8 x 24 x 1 1/8 inches

Edition 8/10

MAP#599



Robert Mapplethorpe

Bill King

1980

gelatin silver print

Paper 40.6 x 50.8 cm / 16 x 20 inches

Image 35.2 x 35 cm / 13 ⁷/₈ x 13 ⁶/₈ inches

Frame 63 x 61 cm / 24 ⁶/₈ x 24 inches

Edition 5/10

MAP#1586



Robert Mapplethorpe

Phyllis Tweel

1979

silver gelatin print

Paper 50.8 x 40.6 cm / 20 x 16 inches

Image 35.5 x 35.5 cm / 14 x 14 inches

Frame 63 x 61 x 3 cm / 24 ⁶/₈ x 24 x 1 ¹/₈ inches

Edition 9/10

MAP#278



Robert Mapplethorpe

Tennant Twins

1976

silver gelatin print

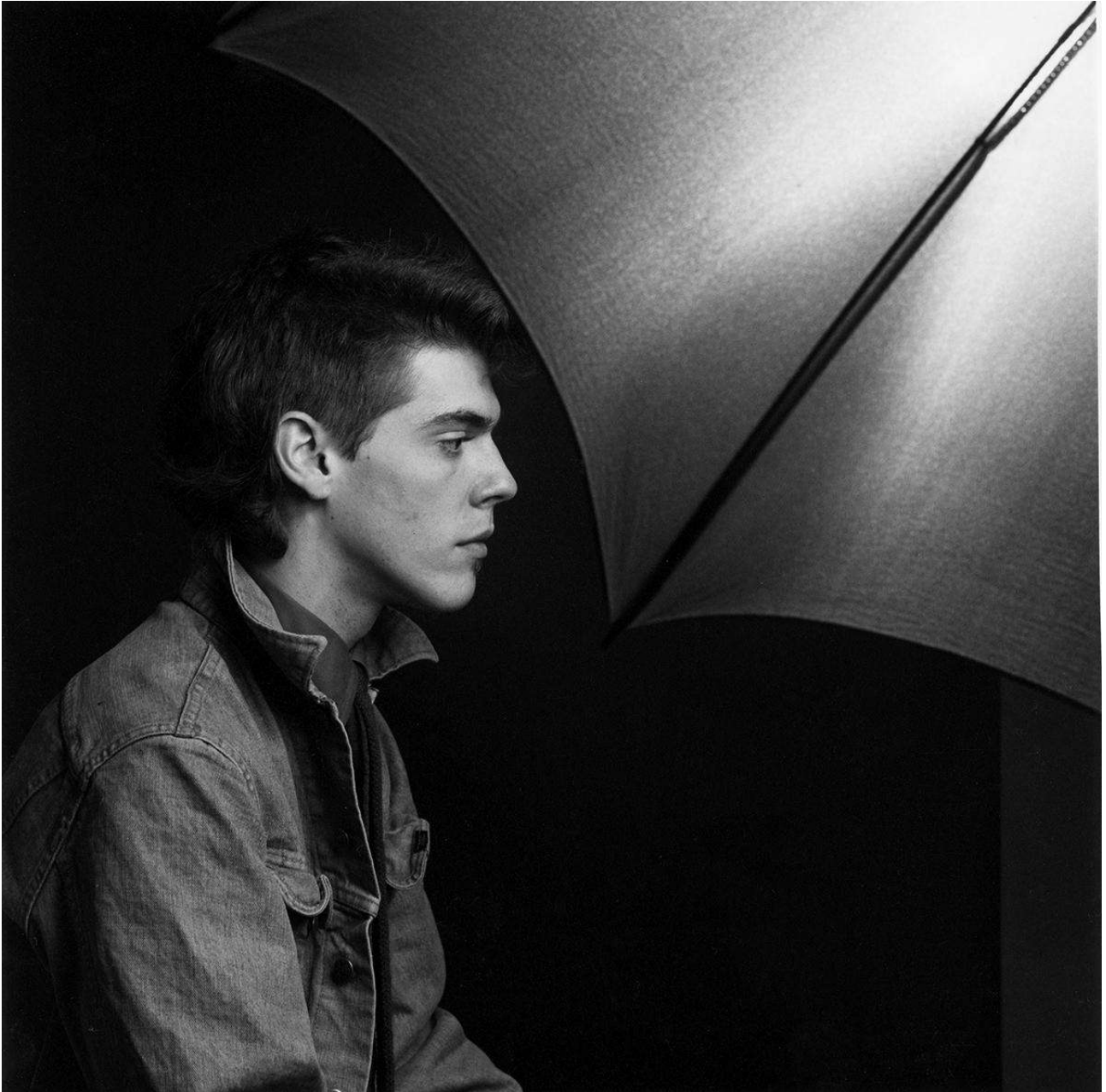
Paper 50.8 x 40.6 cm / 20 x 16 inches

Image 35.2 x 35.5 cm / 13 7/8 x 14 inches

Frame 63 x 61 x 3 cm / 24 6/8 x 24 x 1 1/8 inches

Edition 3/5

MAP#44



Robert Mapplethorpe

Thomas Woodruff

1980

silver gelatin print

Paper 50.8 x 40.6 cm / 20 x 16 inches

Image 35.5 x 35.5 cm / 14 x 14 inches

Frame 63 x 61 cm / 24 6/8 x 24 inches

Edition 1/15

MAP#419



Robert Mapplethorpe

Peter Berlin

1977

silver gelatin print

Paper 50.8 x 40.6 cm / 20 x 16 inches

Image 35.2 x 35.2 cm / 13 7/8 x 13 7/8 inches

Frame 63 x 61 x 3 cm / 24 6/8 x 24 x 1 1/8 inches

Edition 5/10

MAP#200



Robert Mapplethorpe

Sybil Walker

1979

silver gelatin print

Paper 50.8 x 40.6 cm / 20 x 16 inches

Image 35.2 x 34.9 cm / 13 ⁷/₈ x 13 ⁶/₈ inches

Frame 63 x 61 x 3 cm / 24 ⁶/₈ x 24 x 1 ¹/₈ inches

Edition 4/10

MAP#356



Exhibition view

Robert Mapplethorpe, 26/02/2019 - 20/04/2019

©Robert Mapplethorpe Foundation. Courtesy of Galleria Franco Noero, Turin



Exhibition view

Robert Mapplethorpe, 26/02/2019 - 20/04/2019

©Robert Mapplethorpe Foundation. Courtesy of Galleria Franco Noero, Turin



Robert Mapplethorpe

Michael Roth

1983

silver gelatin print

Paper 50.8 x 40.6 cm / 20 x 16 inches

Image 38.1 x 38.1 cm / 15 x 15 inches

Frame 63 x 61 x 3 cm / 24 ⁶/₈ x 24 x 1 ¹/₈ inches

Edition 4/10

MAP#1207



Robert Mapplethorpe

Lisa Lyon

1982

silver gelatin print

Paper 50.8 x 40.6 cm / 20 x 16 inches

Image 37.5 x 48.2 cm / 14 ⁶/₈ x 19 inches

Frame 64 x 77 x 3 cm / 25 ²/₈ x 30 ³/₈ x 1 ¹/₈ inches

Edition 4/10

MAP#899



Robert Mapplethorpe

Michael Roth

1983

silver gelatin print

Paper 50.8 x 40.6 cm / 20 x 16 inches

Image 38.2 x 38.7 cm / 15 x 15 ²/₈ inches

Frame 63 x 61 x 3 cm / 24 ⁶/₈ x 24 x 1 ¹/₈ inches

Edition 4/10

MAP#1194



Exhibition view

Robert Mapplethorpe, 26/02/2019 - 20/04/2019

©Robert Mapplethorpe Foundation. Courtesy of Galleria Franco Noero, Turin



Exhibition view

Robert Mapplethorpe, 26/02/2019 - 20/04/2019

©Robert Mapplethorpe Foundation. Courtesy of Galleria Franco Noero, Turin



Robert Mapplethorpe

Lisa Lyon

1982

silver gelatin print

Paper 50.8 x 40.6 cm / 20 x 16 inches

Image 48.2 x 38.7 cm / 19 x 15 2/8 inches

Frame 77 x 64 x 3 cm / 30 3/8 x 25 2/8 x 1 1/8 inches

Edition 8/10

MAP#819



Robert Mapplethorpe

Lydia Cheng

1987

silver gelatin print

Paper 50.8 x 60.9 cm / 20 x 24 inches

Image 48.7 x 48.7 cm / 19 ¹/₈ x 19 ¹/₈ inches

Frame 77 x 74 x 3 cm / 30 ³/₈ x 29 ¹/₈ x 1 ¹/₈ inches

Edition 9/10

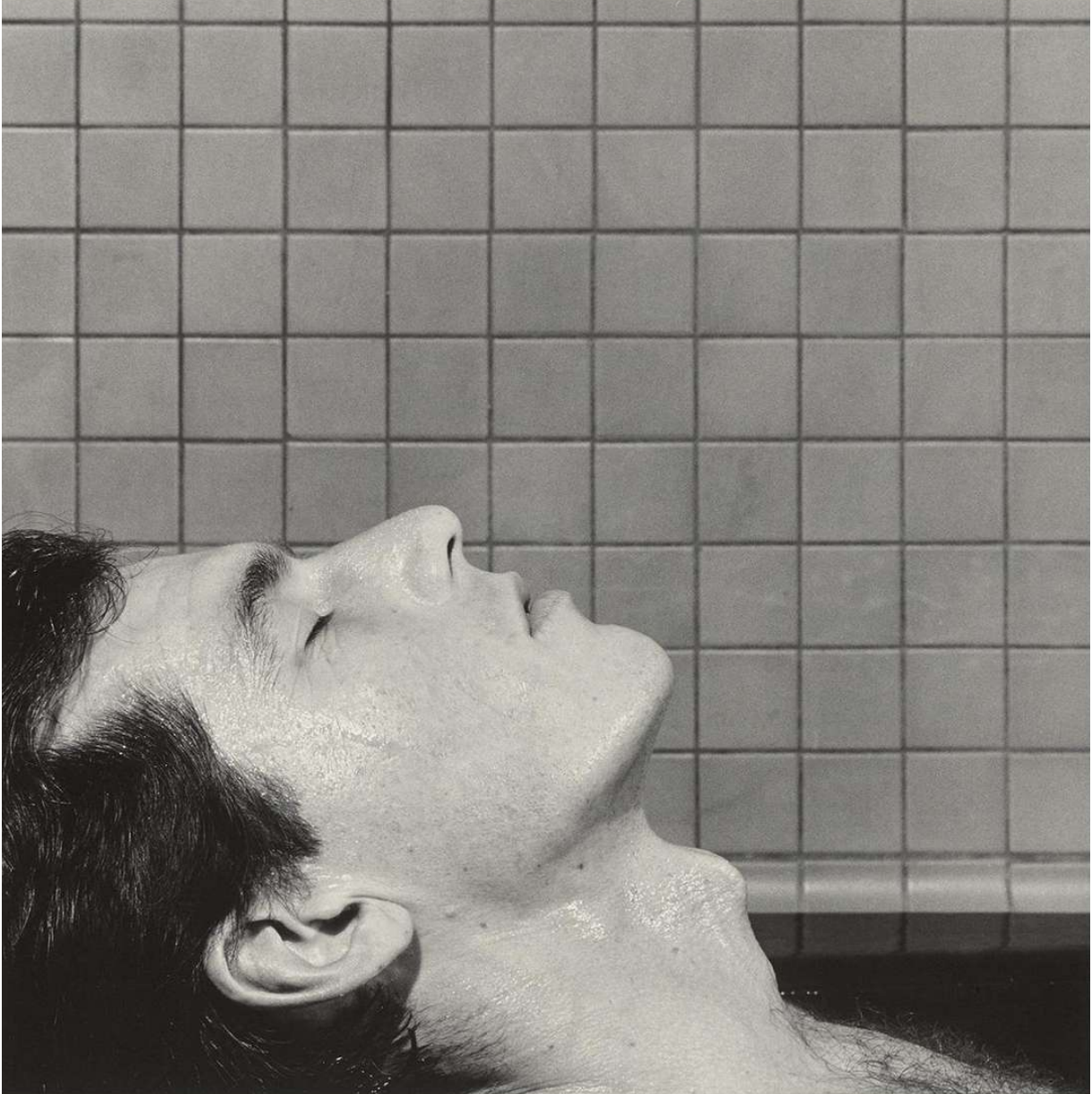
MAP#1764



Exhibition view

Robert Mapplethorpe, 26/02/2019 - 20/04/2019

©Robert Mapplethorpe Foundation. Courtesy of Galleria Franco Noero, Turin



Robert Mapplethorpe

James Ford

1979

silver gelatin print

Paper 50.8 x 40.6 cm / 20 x 16 inches

Image 35.1 x 35.1 cm / 13 ⁶/₈ x 13 ⁶/₈ inches

Frame 63 x 61 x 3 cm / 24 ⁶/₈ x 24 x 1 ¹/₈ inches

Edition 4/10

MAP#344



Exhibition view

Robert Mapplethorpe, 26/02/2019 - 20/04/2019

©Robert Mapplethorpe Foundation. Courtesy of Galleria Franco Noero, Turin



Robert Mapplethorpe

Andes

1979

silver gelatin print

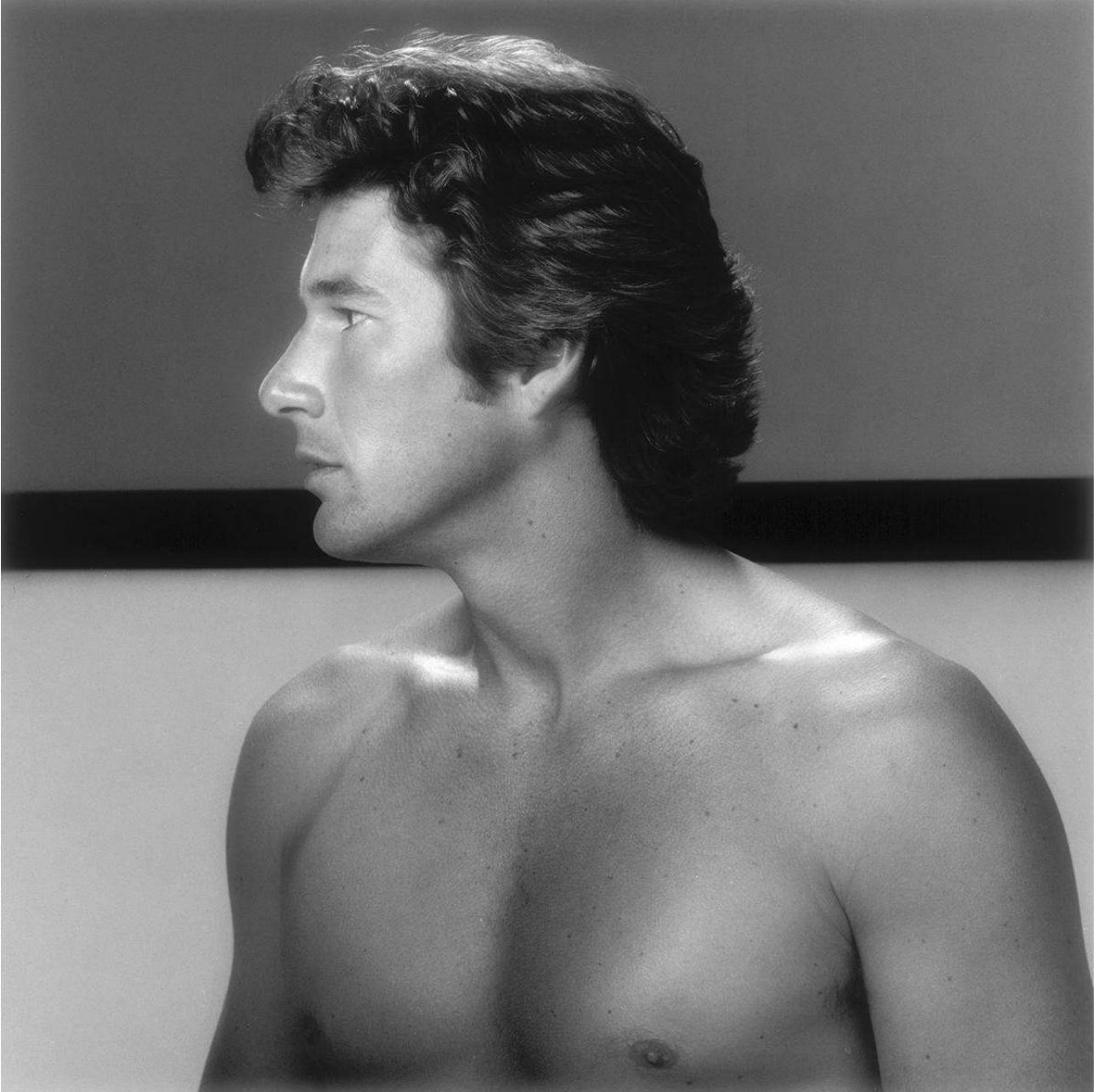
Paper 50.8 x 40.6 cm / 20 x 16 inches

Image 35.2 x 34.9 cm / 13 ⁷/₈ x 13 ⁶/₈ inches

Frame 63 x 61 x 3 cm / 24 ⁶/₈ x 24 x 1 ¹/₈ inches

Edition 9/10

MAP#323



Robert Mapplethorpe

Richard Gere

1982

silver gelatin print

Paper 50.8 x 40.6 cm / 20 x 16 inches

Image 38.4 x 37.7 cm / 15 1/8 x 14 7/8 inches

Frame 63 x 61 x 3 cm / 24 6/8 x 24 x 1 1/8 inches

Edition 7/10

MAP#1584